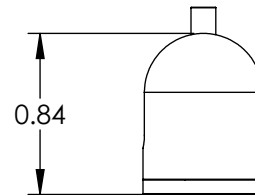
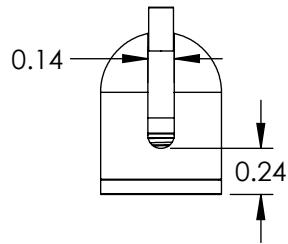


1/32" & 3/64" Cable



1/4-20 UNC 2B ∇ 0.20"

Unless otherwise specified
 1. Dimensions are in inches
 2. Tolerances are:
 .XX \pm .03 .XXX \pm .005 Angles 1°
 3. Break all edges .005 min
 4. Finish 63 micro inches
 5. Dimensions apply after finish
 6. Concentricity = .025 TIR

DRAWN BY RDK REV INT
 CHECKED BY

PROPRIETARY AND CONFIDENTIAL

This drawing and these specifications are the exclusive property of GRIPLOCK SYSTEMS LLC. and shall not be divulged, reproduced, copied, or used as the basis for the manufacture or sale of apparatus without the express written authorization of GRIPLOCK SYSTEMS LLC.

REF: DATE:
 MATERIAL: VARIOUS
 SCALE: 1:1 FILE: 12-BS-1420 rA



GRIPLOCK SYSTEMS

1132 Mark Ave., Carpinteria, CA 93013
 Phone (805) 566-0064 Fax (805) 566-0065

PART NUMBER: 12-BS-1420

DESCRIPTION: Swivel Gripper for 1/32" - 3/64" 7x7 Cable