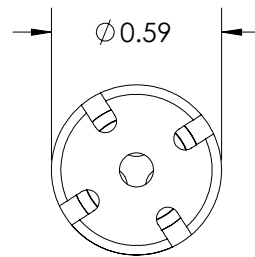
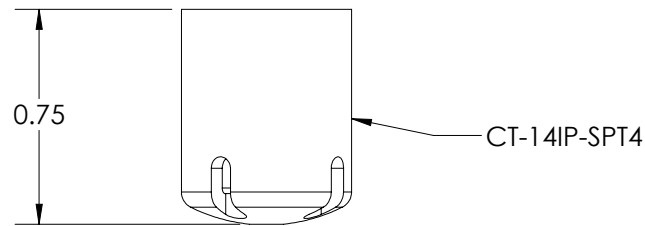
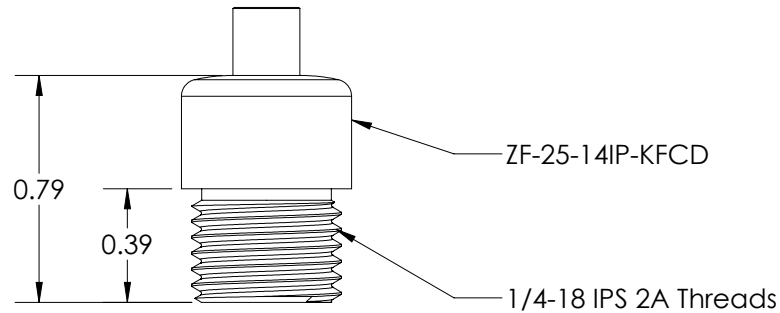
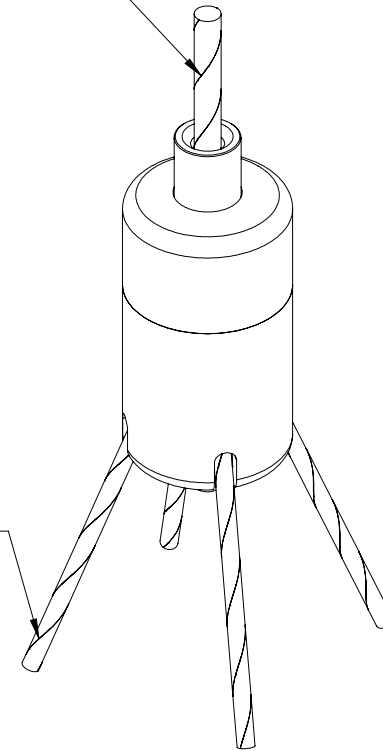


REVISIONS		
REV.	DESCRIPTION	DATE



1/16" - 3/32"  
Primary Cable

3/64" - 1/16"  
Secondary Cables



Unless otherwise specified  
 1. Dimensions are in inches  
 2. Tolerances are:  
 .XX ±.01 .XXX ±.005 Angles 1°  
 3. Break all edges .005 min  
 4. Finish 63 micro inches  
 5. Dimensions apply after finish  
 6. Concentricity = .025 TIR

DRAWN BY NRB REV A

CHECKED BY

**PROPRIETARY AND CONFIDENTIAL**

This drawing and these specifications are the exclusive property of GRIPLOCK SYSTEMS LLC, and shall not be divulged, reproduced, copied, or used as the basis for the manufacture or sale of apparatus without the express written authorization of GRIPLOCK SYSTEMS LLC.

REF: DATE:

MATERIAL: NICKEL PLATED BRASS

SCALE: 3:2 FILE: ZF-25-SPT4



**GRIPLOCK SYSTEMS**

1132 Mark Ave., Carpinteria, CA 93013  
 Phone (805) 566-0064 Fax (805) 566-0065

PART NUMBER: ZF-25-SPT4

DESCRIPTION: Type 25 Standard Sputnik Gripper